



MAISON HELER

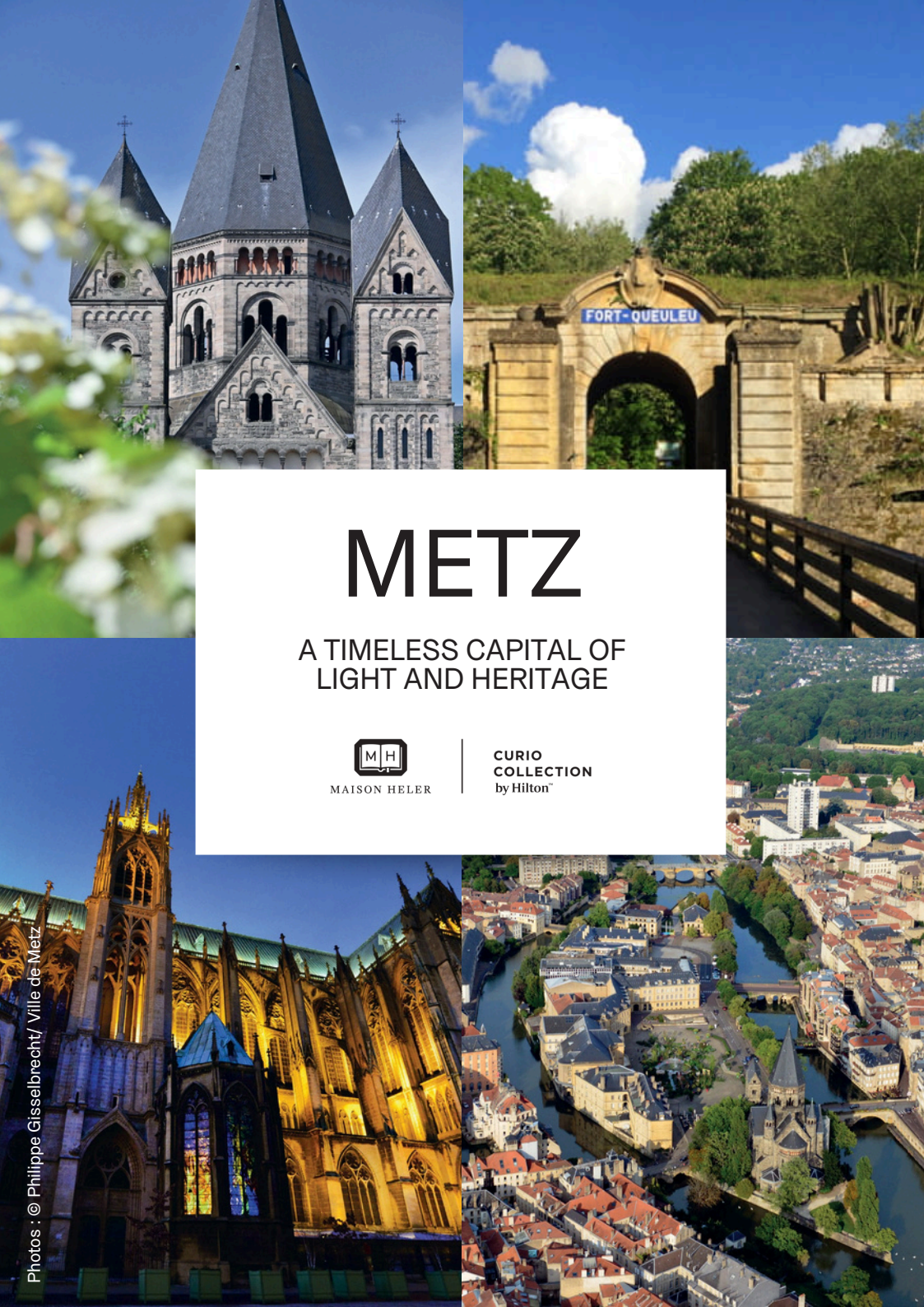
# MAISON HELER

—  
CURIO COLLECTION  
by Hilton™

HOTEL · RESTAURANTS · BARS · ROOFTOP · MEETINGS & SEMINARS







# METZ

A TIMELESS CAPITAL OF  
LIGHT AND HERITAGE



MAISON HELEL

CURIO  
COLLECTION  
by Hilton™

Metz is a city where history, nature and modernity meet with effortless grace. The majestic Saint-Étienne Cathedral — the “Lantern of the Good Lord” — watches over cobbled streets, lively squares and the imperial railway station, a masterpiece of neo Romanesque architecture.

Here, art lives everywhere. The bold silhouette of the Centre Pompidou-Metz radiates creativity, while the Arsenal and the Opéra-Théâtre fill the air with music and movement. Metz is a city that inspires, that invents, that reinvents itself each day.

## A CITY TURNED TOWARD WATER AND NATURE

Cradled by the Moselle and Seille rivers, Metz can be discovered through river walks and cruises offering new perspectives on its skyline. Its gardens — from the Botanical Garden to the Esplanade — make it one of France’s greenest cities, an oasis for leisure, inspiration, or open-air team-building moments.

## A SPORTIVE AND VIBRANT CITY

Metz pulses to the rhythm of sport — tennis, football, handball, and golf coexist with outdoor adventures such as rowing, kayaking or the city’s annual marathon that brings its streets to life. A dynamic, accessible offering that appeals equally to enthusiasts and curious newcomers.

## UNMISSABLE EVENTS

Throughout the year, Metz glows and transforms. In summer, Constellations de Metz turns the city into an open-air gallery of digital art and light installations. In winter, its Christmas Market, ranked among Europe’s finest, fills the historic heart of the city with an enchanting atmosphere — a world of lights, scents and traditions.

## METZ, CITY OF MEMORY

At the heart of numerous conflicts — from the Thirty Years’ War to the Franco-Prussian War of 1870–1871 and the two World Wars — the territory of the former Bishopric of Metz experienced both the benefits and the hardships of its proximity to a fortified city, which left its mark on people’s minds as well as on the stone itself. This military heritage continues to shape the landscape of the Eurometropolis of Metz today. Despite these trials, Metz and its region have always managed to rebuild and thrive.

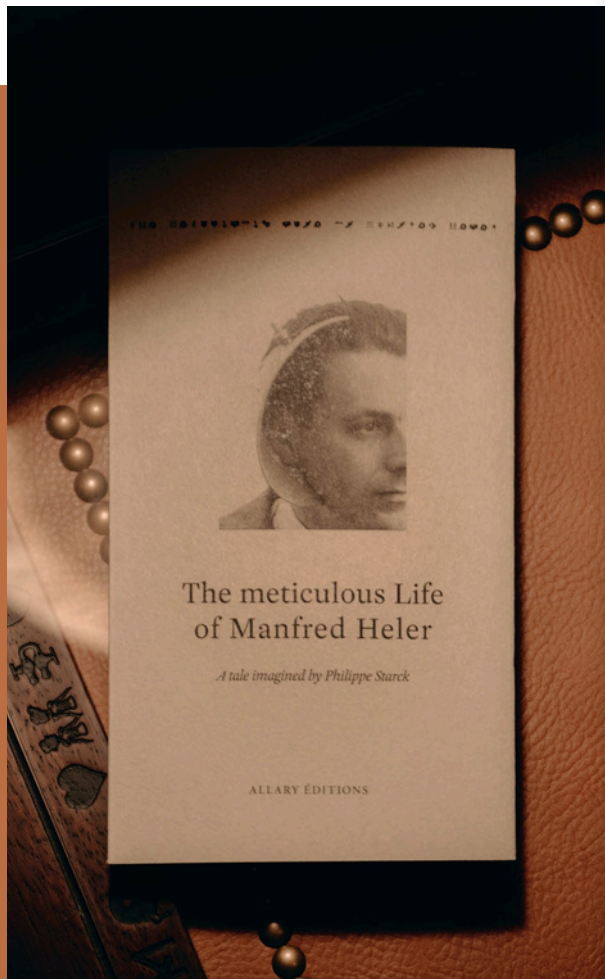
## SITES TO DISCOVER

- Fort de Queuleu
- American Memorial (“The Eagle”) in Bellecroix
- Museum of the War of 1870 and the Annexation in Gravelotte
- Verdun, Marne, Ypres...,

WELCOME TO METZ !



# A HABITABLE WORK OF ART



The story of Maison Heler begins with a novel — *La Vie Minutieuse de Manfred Heler*, imagined by Philippe Starck. A unique and surprising hospitality experience unfolds here: the imagined home of Manfred Heler, a meticulous dreamer who lives alone in a grand 19th-century Lorraine house, forever creating, marvelling, and trying to charm Rose, a love poised between dream and reality.

Maison Heler rises as a contemporary monolith — nine stories high — crowned by a replica of an 18th-century Lorraine home. This juxtaposition between modernity and tradition reflects the poetic vision of Philippe Starck, who calls it “a habitable, surrealist and poetic work of art.”

## THE SPIRIT OF MANFRED BREATHES THROUGH EVERY DETAIL — THE DÉCOR, THE ATMOSPHERE, EVEN THE CULINARY JOURNEY.

Two souls. Two stories. Two tables. *La Cuisine de Rose*, first — a tender brasserie of refined whispers and bold bistronomic notes. Then *La Maison de Manfred*, on the top floor, with its rooftop terrace and breathtaking views — a place where each table feels like a page torn from a travel diary.

Here, dream and reality intertwine.

Each space becomes a chapter in a living fable — a poetic refuge where French art de vivre meets the whimsical soul of its imaginary host. Guests are no longer mere visitors: they become characters within the story, gently invited to live, to dream, and to awaken to beauty.



# DISTINCTIONS & RECOGNITION

These distinctions reflect a promise fulfilled — to surprise, to move, and to elevate hospitality through design and storytelling.



VOTED "BEST ARCHITECTURE" 2025



VOTED 3RD BEST HOTEL IN EUROPE 2025



HOTEL SELECTED



SPECIAL STYLE & DESIGN AWARD



HOTEL SELECTED



AWARDED BY HOSPITALITY DESIGN FOR ITS BOLD APPROACH

RANKED AMONG THE 15 MOST ANTICIPATED HOTELS IN THE WORLD.

"A unique, poetic and extraordinary space — open to all, to reconnect, to dream, to rise."

HOTELDESIGNS

"At Maison Heler Metz, brutalism meets bedtime story — a 19th-century house perched atop a concrete tower, guided by a fictional host."

GALERIE MAGAZINE

"Maison Heler is an escape into dream, utopia, love and poetry," muses Starck. "A hotel where the pataphysical science of imaginary solutions creates tangible design floating in the clouds."

WALLPAPER



# MAISON HELER EXPERIENCE

31 RUE JACQUES CHIRAC  
57000 METZ



104

SPACIOUS ROOMS

2

RESTAURANTS AND BARS AVAILABLE  
FOR PRIVATE HIRE

1

ROOFTOP, TERRACE AND GARDEN

4

MODULAR MEETING SPACES

1

ON-SITE PAID PARKING





# ROOMS & SUITES



MAISON HELIER

CURIO  
COLLECTION  
by Hilton™



# ROOMS & SUITES



MAISON HELER OFFERS 104 ROOMS, INCLUDING 14 TWINS, ACROSS SEVEN FLOORS AND FIVE CATEGORIES:

Guest, Superior, Deluxe, Junior Suite and the singular Manfred Suite. From 25 to 65 m<sup>2</sup>, each room blends comfort and refinement. King-size beds face wide bay windows, inviting guests to wake to the light and the city skyline. All rooms feature walk-in or rainfall showers, while the Manfred Suite, located on the hotel's highest floor, distinguishes itself with a freestanding bathtub, double Italian shower, and a panoramic view of Metz.



EACH ROOM EMBODIES THE METICULOUS LIFE OF MANFRED HELER

Engraved quotes, secret symbols, old coins hidden within the walls, and an invented alphabet to decode. In this world of fine materials — 90% crafted locally — reimagined Lorraine wardrobes and bespoke furniture designed by Philippe Starck give every space an identity both timeless and intimate.



# ROOMS & SUITES



14

## TWINS

27 m<sup>2</sup>

Two twin beds

Including 4 accessible

rooms

Shower



16

## GUEST ROOMS

25 m<sup>2</sup>

King-size bed or  
twin beds  
Shower





# ROOMS & SUITES



27

## DELUXE ROOMS

29 m<sup>2</sup>

King-size bed

Shower



39

## SUPERIOR ROOMS

27 m<sup>2</sup>

King-size bed or

Twin beds

Shower

Floors 4 to 7





# ROOMS & SUITES



## NOS 104 CHAMBRES & SUITES

### 16 GUEST ROOMS

25 m<sup>2</sup>  
King-size bed or  
twin beds  
Shower

### 14 TWINS

27 m<sup>2</sup>  
Two twin beds  
Including 4 accessible  
rooms  
Shower

### 27 DELUXE ROOMS

29 m<sup>2</sup>  
King-size bed  
Shower

### 39 SUPERIOR ROOMS

27 m<sup>2</sup>  
King-size bed or  
Twin beds  
Shower  
Floors 4 to 7

### 7 JUNIOR SUITES

45 m<sup>2</sup>  
King-size bed +  
one single bed  
Shower

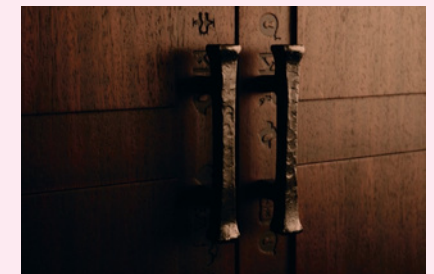
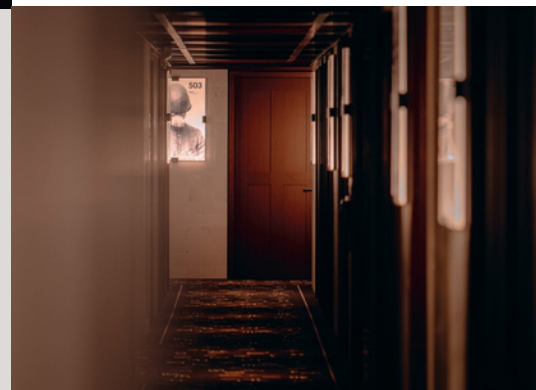
### MANFRED SUITE

65 m<sup>2</sup>  
King-size bed  
Separate living area  
Double dressing  
Bathroom with bathtub  
and double walk-in  
shower

7

### JUNIOR SUITES

45 m<sup>2</sup>  
King-size bed  
+ one single bed  
Shower



## INTERCONNECTING ROOMS

14 connecting rooms, allowing for the creation of 7 Family Rooms  
(52 m<sup>2</sup> each, combining one King room and one Twin room).



# ROOMS & SUITES

## MANFRED SUITE

65 m<sup>2</sup>

King-size bed

Separate living area

Double dressing

Bathroom with bathtub and  
double walk-in shower





# RESTAURANTS



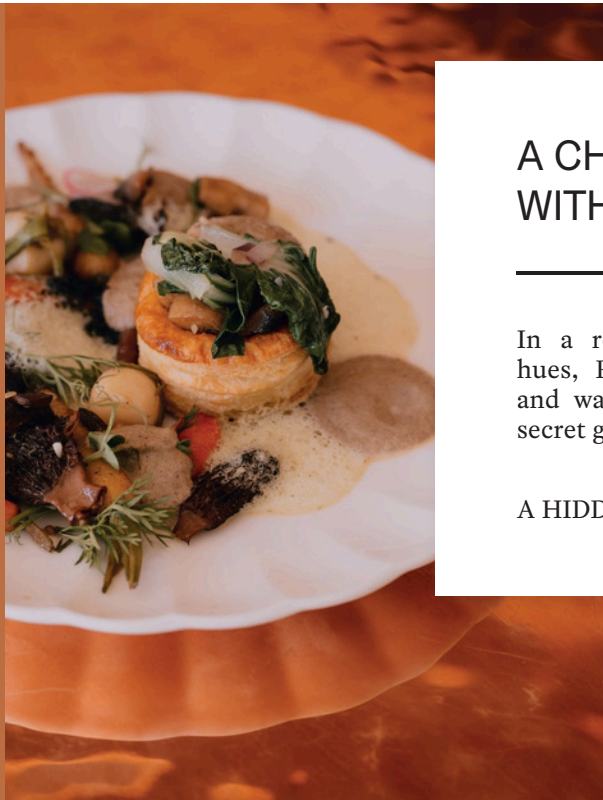
MAISON HELEL

CURIO  
COLLECTION  
by Hilton™



# RESTAURANTS

## LA CUISINE DE ROSE



### A CHIC BRASSERIE WITH A TENDER HEART

In a romantic setting with powdery hues, Rose welcomes you with grace and warmth, either indoors or in her secret garden terrace.

A HIDDEN GEM OF SERENITY.

FALL — WINTER  
Open from 6:30 AM  
to 3:00 PM

SPRING — SUMMER  
Open from 7:00 PM  
to 9:30 PM





# RESTAURANTS

## LA CUISINE DE ROSE



### BREAKFAST

Each morning, breakfast celebrates regional flavors. Signature of the house: the madeleine with homemade butter — Manfred's favorite indulgence and a tender nod to childhood.

6:30 AM – 10:30 AM



### LUNCH

A cuisine as beautiful as it is sincere, enhancing local products with the rhythm of the seasons. Here, dishes don't merely nourish — they declare their love.

12:00 PM – 2:00 PM

*Toute la semaine*



### TEA TIME

Savor Rose's tea time — a delicate pause on the terrace, when the day softens into light.

3:30 PM – 6:00 PM

*Au printemps et en été*



### APERITIF

At Rose's bar or by the pétanque court, enjoy a drink in the golden glow of early evening.

6:00 PM – 8:00 PM



### DINNER

As the night descends, Rose's bistronomic menu blends generosity and finesse — for evenings that linger gently around the table

7:00 PM – 9:30 PM

*Closed Sunday and Monday evenings*



# RESTAURANTS

## LA MAISON DE MANFRED



### AN INTUITIVE CUISINE OF DISCOVERY

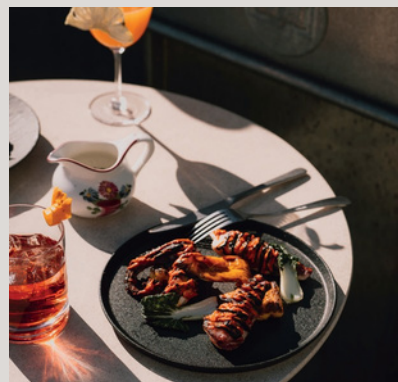
Perched on the ninth floor, La Maison de Manfred overlooks Metz from the city's only panoramic rooftop.

"THE STAINED GLASS BRINGS US INSIDE A HABITABLE AND CONCEPTUAL ARTWORK. IT SHAPES THE ATMOSPHERE, IT STAGES THE LIGHT."

ARA STARCK, designer of Maison de Manfred's stained glass

THURSDAY TO SATURDAY  
12:00 PM – 1:00 AM

SUNDAY TO WEDNESDAY  
12:00 PM – 12:00 AM





# RESTAURANTS

## LA MAISON DE MANFRED



### LUNCH

An intuitive cuisine of travel and sharing. Inspired by his journeys, Manfred crafts a cuisine of discovery — meticulous and generous — to be savored in the panoramic dining room or at the bar counter.

---

12:00 PM – 2:00 PM



### MANFRED'S FOUR HOURS

A timeless moment between sky and earth — an invitation to enjoy Metz's unique rooftop and savor a gourmet selection imagined by Manfred.

---

4:00 PM – 6:00 PM

*In fall and winter*



### DINNER

At nightfall, the panoramic dining room transforms into a laboratory of curiosities. Dishes are shared like secrets, in a spirit of discovery and generosity.

---

7:00 PM – 10:00 PM



### EVENING

Manfred's bar stands out for its inventive mixology: unique cocktails such as the Laborantin, a refined wine selection, and local craft beers complete the experience. The venue becomes an exclusive gem — fully or semi-privatizable upon request — offering breathtaking views over Metz.

---

7:00 PM – 12:00 AM

*Sunday to Wednesday*

7:00 PM – 1:00 AM

*Thursday to Saturday*



# EVENT SPACES



MAISON HELER

CURIO  
COLLECTION  
by Hilton™



# EVENT SPACES



## DESIGNED TO INSPIRE

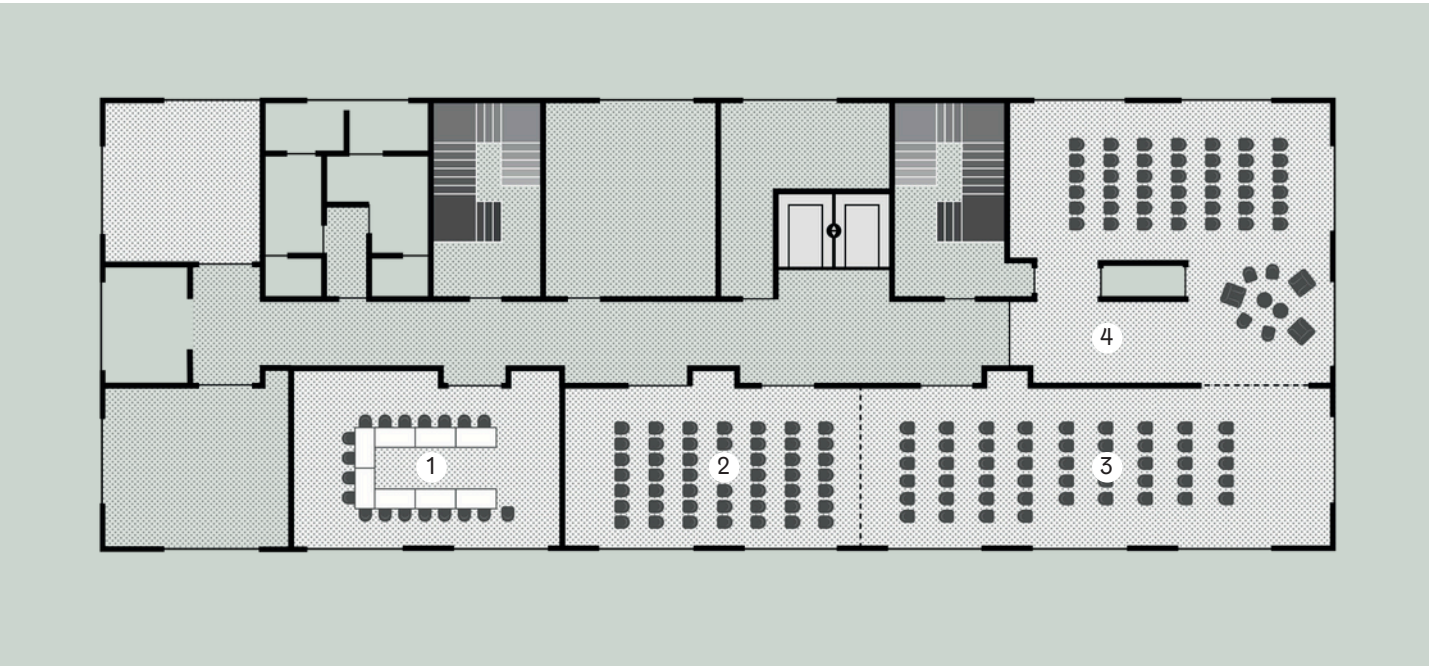
---

Bathed in natural daylight and offering 2.7-meter ceilings, our meeting rooms accommodate up to 150 guests. Each space is fully equipped: stationery, air-conditioning, interactive screens, premium video conferencing, high-speed Wi-Fi, mineral water, and coffee machines. Every detail is designed for comfort, efficiency and inspiration — ensuring the success of your event.





# EVENT SPACES










	AREA	BOARDROOM	U	THEATRE	BANQUET	CLASSROOM	COCKTAIL
① ARGONNE	54 m2	18	19	19	19	19	19
② YPRES	57 m2	22	28	38	24	12	55
③ VERDUN	90 m2	38	40	79	40	44	90
④ MARNE	93 m2	22	28	55	32	28	90
②+③ YPRES + VERDUN	147 m2	60	—	117	64	56	145
MANFRED - RESTAURANT	—	—	—	—	86	—	150



# EVENT SPACES



## ARGONNE

						
AREA	BOARDROOM	U	THEATRE	BANQUET	CLASSROOM	COCKTAIL
57 m2	22	28	38	24	12	55



# EVENT SPACES



## YPRES

AREA	BOARDROOM	U	THEATRE	BANQUET	CLASSROOM	COCKTAIL
54 m2	18	19	19	19	19	19



# EVENT SPACES



## VERDUN



AREA

90 m2



BOARDROOM

38



U

40



THEATRE

79



BANQUET

40



CLASSROOM

44



COCKTAIL

90



MAISON HELIER

CURIO  
COLLECTION  
by Hilton™



# EVENT SPACES



## MARNE

AREA	BOARDROOM	U	THEATRE	BANQUET	CLASSROOM	COCKTAIL
93 m2	22	28	55	32	28	90



# EVENT SPACES



## YPRES + VERDUN

AREA	BOARDROOM	U	THEATRE	BANQUET	CLASSROOM	COCKTAIL
147 m2	60	—	117	64	56	145



# EXPERIENCES & PARTNERSHIPS



MAISON HELEL

CURIO  
COLLECTION  
by Hilton™



# EXPERIENCES & PARTNERSHIPS

## ACTIVITIES TO UNITE AND INSPIRE

Within the hotel, your teams can share exclusive mixology or oenology workshops, with refined tastings inspired by the inventive spirit of Manfred Heler. CSR-themed sessions can also be organized — on sustainability, waste reduction or responsible consumption.

Beyond the hotel, our local partners curate cultural and playful activities: treasure hunts, urban rallies exploring Metz's landmarks (from the Cathedral to the Imperial Station), guided tours and street-art trails revealing a creative side of the city.

Outdoor experiences abound — through the Esplanade, along the Seille River, or in green havens like the Grand Pâtural Park. Cultural discoveries await at the Centre Pompidou-Metz, Musée de la Cour d'Or, or the Cité Musicale, alongside lighter moments such as escape games, cycling tours, or river cruises with the Compagnie des Bateaux de Metz.



Photos : © Philippe Gisselbrecht/ Ville de Metz





# SUSTAINABILITY



MAISON HELER

CURIO  
COLLECTION  
by Hilton™



# SUSTAINABILITY

## METZ, A GREEN AND COMMITTED CITY

---

Renowned for its heritage, Metz is also one of the greenest cities in France, ranking in the national Top 5 since 2020. Awarded the “4 Flowers” label in the Villes et Villages Fleuris competition, the city gracefully combines nature and sustainable urban living. Metz now boasts a 90-kilometer cycling network — soon to reach 180 kilometers — and a pedestrian city center spanning more than 52,000 m<sup>2</sup>. Soft mobility is strongly encouraged through the Mettis network, composed of hybrid buses that make daily travel easier while reducing environmental impact.



## MAISON HELER, A RESPONSIBLE HOTEL

---

In this same spirit, Maison Heler is proudly committed to sustainability and currently pursuing Green Key certification, an international label of eco-conscious hospitality. The hotel favors local producers and offers vegetarian options in its restaurants, reflecting its respect for both terroir and planet.

Single-use plastics have been eliminated in favor of durable alternatives, supported by rigorous waste sorting. Every daily gesture is designed to minimize the carbon footprint and strengthen the connection between comfort and environmental awareness — in partnership with Metz Métropole.



MAISON HELER

CURIO  
COLLECTION  
by Hilton™



# HOW TO REACH MAISON HELER



## BY TRAIN

METZ-VILLE STATION

8 min walk (800 m)

GARE LORRAINE TGV :

30 minutes en voiture – 20 kilomètres



## BY CAR

ADDRESS:

31 rue Jacques Chirac – 57000 METZ

DEPUIS L'A31 :

Exit Metz-Centre

→ Centre Pompidou-Metz /  
Quartier de l'Amphithéâtre

FROM A4 :

Bypass toward Metz-Centre

→ Centre Pompidou-Metz /  
Quartier de l'Amphithéâtre

PUBLIC PARKING

Messageries (behind the hotel)  
and Muse

BYCICLE PARKING :

Available at the hotel entrance



## BY AIR

METZ-NANCY-LORRAINE AIRPORT :  
30 min – 22 km

LUXEMBOURG-FINDEL AÉROPORT :  
1 h – 70 km

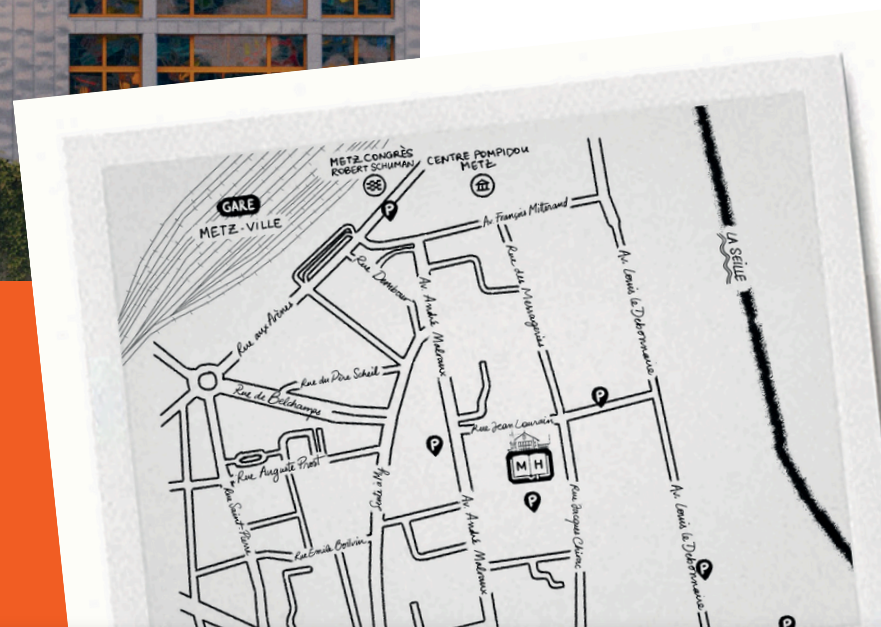


## BY BUS

PISCINE OLYMPIQUE (LINE 17) : 3  
min walk

MUSE (LINE 5) : 3 min walk

CENTRE POMPIDOU-METZ  
(METTIS A OR B) : 5 min walk







“WITHOUT A VISION — HUMAN, SOCIAL, OR EMOTIONAL —  
A PROJECT HAS NO LEGITIMACY TO EXIST.”

PHILIPPE STARCK

# CONTACT

SALES DEPARTMENT

+33 3 56 63 16 31 (Key 3)

MAIL

[commercial@maisonhelermetz.com](mailto:commercial@maisonhelermetz.com)

ADRESSE

31 Rue Jacques Chirac  
57000 METZ



MAISON HELIER

CURIO COLLECTION  
by Hilton™